

## SMUG1 Polyclonal Antibody

### Description

<b>Product type</b>	Primary Antibody
<b>Code</b>	BT-AP08415
<b>Host</b>	Rabbit
<b>Isotype</b>	IgG
<b>Size</b>	20ul, 50ul, 100ul
<b>Immunogen</b>	The antiserum was produced against synthesized peptide derived from human SMUG1. AA range:91-140
<b>Mol wt</b>	29862
<b>Species reactivity</b>	Human, Mouse, Rat, Monkey
<b>Clonality</b>	Polyclonal
<b>Recommended application</b>	WB, IHC-p, ELISA
<b>Concentration</b>	1 mg/ml
<b>Full name</b>	SMUG1 Antibody
<b>Synonyms</b>	SMUG1; Single-strand selective monofunctional uracil DNA glycosylase

**This product is for research use only, not for use in human, therapeutic or diagnostic procedure.**

### Background

SMUG1 encodes a protein that participates in base excision repair by removing uracil from single- and double-stranded DNA. Many alternatively spliced transcript variants exist for this gene; the full-length nature is known for some but not all of the variants.

### Recommended Dilution

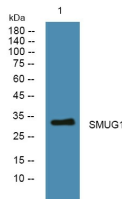
WB: 1: 500 - 1: 2000

IHC: 1: 100 - 1: 300

ELISA: 1: 40000

Not yet tested in other applications.

### Images



Western blot analysis of lysates from Jarkat cells, primary antibody was diluted at 1:1000, 4<sup>o</sup>over night

### Storage

-20°C for one year