

## SOD-2 Polyclonal Antibody

### Description

<b>Product type</b>	Primary Antibody
<b>Code</b>	BT-AP08451
<b>Host</b>	Rabbit
<b>Isotype</b>	IgG
<b>Size</b>	20ul, 50ul, 100ul
<b>Immunogen</b>	The antiserum was produced against synthesized peptide derived from the Internal region of human SOD2. AA range:91-140
<b>Mol wt</b>	24420
<b>Species reactivity</b>	Human, Mouse, Rat
<b>Clonality</b>	Polyclonal
<b>Recommended application</b>	WB, IHC-p, ELISA
<b>Concentration</b>	1 mg/ml
<b>Full name</b>	SOD-2 Antibody
<b>Synonyms</b>	SOD2; Superoxide dismutase [Mn], mitochondrial

This product is for research use only, not for use in human, therapeutic or diagnostic procedure.

### Background

SOD2 is a member of the iron/manganese superoxide dismutase family. It encodes a mitochondrial protein that forms a homotetramer and binds one manganese ion per subunit. This protein binds to the superoxide byproducts of oxidative phosphorylation and converts them to hydrogen peroxide and diatomic oxygen. Mutations in this gene have been associated with idiopathic cardiomyopathy (IDC), premature aging, sporadic motor neuron disease, and cancer. Alternative splicing of this gene results in multiple transcript variants. A related pseudogene has been identified on chromosome 1.

### Recommended Dilution

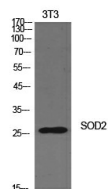
WB: 1: 500 - 1: 2000

ELISA: 1: 10000

IHC-p: 100 - 300

Not yet tested in other applications.

### Images



Western Blot analysis of NIH-3T3 cells using SOD-2 Polyclonal Antibody. Secondary antibody was diluted at 1:20000

### Storage

-20°C for one year