

Spectrin Beta V Polyclonal Antibody

Description

Product type	Primary Antibody
Code	BT-AP08500
Host	Rabbit
Isotype	IgG
Size	20ul, 50ul, 100ul
Immunogen	The antiserum was produced against synthesized peptide derived from human SPTBN5. AA range:481-530
Mol wt	416835
Species reactivity	Human
Clonality	Polyclonal
Recommended application	IHC-p, ELISA
Concentration	1 mg/ml
Full name	Spectrin beta V Antibody
Synonyms	SPTBN5; BSPECV; HUBSPECV; HUSPECV; Spectrin beta chain; non-erythrocytic 5; Beta-V spectrin

This product is for research use only, not for use in human, therapeutic or diagnostic procedure.

Background

SPTBN5 (Spectrin Beta, Non-Erythrocytic 5) is a Protein Coding gene. Among its related pathways are Sertoli-Sertoli Cell Junction Dynamics and Interleukin-3, 5 and GM-CSF signaling. GO annotations related to this gene include actin binding and kinesin binding. An important paralog of this gene is SYNE2.

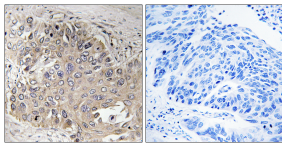
Recommended Dilution

IHC: 1: 100 - 1: 300

ELISA: 1: 40000

Not yet tested in other applications.

Images



Immunohistochemistry analysis of paraffin-embedded human lung carcinoma, using SPTBN5 Antibody. The picture on the right is blocked with the synthesized peptide.

Storage

-20°C for one year