

## Spi-C Polyclonal Antibody

### Description

<b>Product type</b>	Primary Antibody
<b>Code</b>	BT-AP08507
<b>Host</b>	Rabbit
<b>Isotype</b>	IgG
<b>Size</b>	20ul, 50ul, 100ul
<b>Immunogen</b>	The antiserum was produced against synthesized peptide derived from human SPIC. AA range:131-180
<b>Mol wt</b>	29180
<b>Species reactivity</b>	Human
<b>Clonality</b>	Polyclonal
<b>Recommended application</b>	WB, IF, ELISA
<b>Concentration</b>	1 mg/ml
<b>Full name</b>	Spi-C Antibody
<b>Synonyms</b>	SPIC; Transcription factor Spi-C

**This product is for research use only, not for use in human, therapeutic or diagnostic procedure.**

### Background

Transcription factor Spi-C encoded by SPIC regulates the development of red pulp macrophages, which are necessary for iron homeostasis and the recycling of red blood cells.

### Recommended Dilution

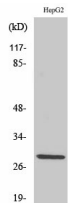
WB: 1: 500 - 1: 2000

IF: 1: 200 - 1: 1000

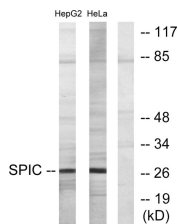
ELISA: 1: 10000

Not yet tested in other applications.

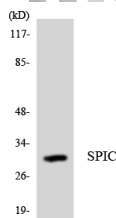
### Images



Western Blot analysis of various cells using Spi-C Polyclonal Antibody cells nucleus.



Western blot analysis of lysates from HepG2 and HeLa cells, using SPIC Antibody. The lane on the right is blocked with the synthesized peptide.



Western blot analysis of the lysates from Jurkat cells using SPIC antibody.

## Storage

-20°C for one year

501 Changsheng S Rd, Nanhu Dist, Jiaxing, Zhejiang, China

Tel: 86 21 31007137 | E-mail: [save@bt-laboratory.com](mailto:save@bt-laboratory.com) | [www.bt-laboratory.com](http://www.bt-laboratory.com)