

SRp75 Polyclonal Antibody

Description

Product type	Primary Antibody
Code	BT-AP08567
Host	Rabbit
Isotype	IgG
Size	20ul, 50ul, 100ul
Immunogen	The antiserum was produced against synthesized peptide derived from human SFRS4. AA range:111-160
Mol wt	56678
Species reactivity	Human, Mouse
Clonality	Polyclonal
Recommended application	WB, IHC-p, ELISA
Concentration	1 mg/ml
Full name	SRp75 Antibody
Synonyms	SRSF4; SFRS4; SRP75; Serine/arginine-rich splicing factor 4; Pre-mRNA-splicing factor SRP75; SRP001LB; Splicing factor; arginine/serine-rich 4

This product is for research use only, not for use in human, therapeutic or diagnostic procedure.

Background

SRSF4 encodes a member of the arginine/serine-rich splicing factor family. The serine/arginine-rich splicing factor 4 likely functions in mRNA processing.

Recommended Dilution

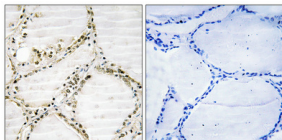
WB: 1: 500 - 1: 2000

IHC: 1: 100 - 1: 300

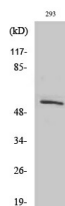
ELISA: 1: 20000

Not yet tested in other applications.

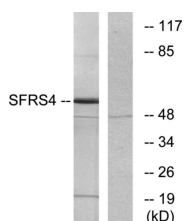
Images



Immunohistochemical analysis of paraffin-embedded Human thyroid gland. Antibody was diluted at 1:100(4° overnight). High-pressure and temperature Tris-EDTA,pH8.0 was used for antigen retrieval. Negative contrl (right) obtained from antibody was pre-absorbed by immunogen peptide.



Western Blot analysis of various cells using SRp75 Polyclonal Antibody diluted at 1:1000 cells nucleus.



Western blot analysis of lysates from LOVO cells, using SFRS4 Antibody. The lane on the right is blocked with the synthesized peptide.

Storage

-20°C for one year

501 Changsheng S Rd, Nanhu Dist, Jiaxing, Zhejiang, China

Tel: 86 21 31007137 | E-mail: save@bt-laboratory.com | www.bt-laboratory.com