

SRY Polyclonal Antibody

Description

Product type	Primary Antibody
Code	BT-AP08576
Host	Rabbit
Isotype	IgG
Size	20ul, 50ul, 100ul
Immunogen	Synthesized peptide derived from the Internal region of human SRY.
Mol wt	23884
Species reactivity	Human
Clonality	Polyclonal
Recommended application	WB, IHC-p, ELISA
Concentration	1 mg/ml
Full name	SRY Antibody
Synonyms	SRY; TDF; Sex-determining region Y protein; Testis-determining factor

This product is for research use only, not for use in human, therapeutic or diagnostic procedure.

Background

This intronless gene encodes a transcription factor that is a member of the high mobility group (HMG)-box family of DNA-binding proteins. Sex-determining region Y protein is the testis-determining factor (TDF), which initiates male sex determination. Mutations in this gene give rise to XY females with gonadal dysgenesis (Swyer syndrome); translocation of part of the Y chromosome containing this gene to the X chromosome causes XX male syndrome.

Recommended Dilution

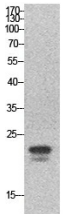
WB: 1: 500 - 1: 2000

IHC-p: 1: 100 - 1: 300

ELISA: 1: 20000

Not yet tested in other applications.

Images



Western Blot analysis of HeLa cells using SRY Polyclonal Antibody. Secondary antibody was diluted at 1:20000

Storage

-20°C for one year