

Stat1 Polyclonal Antibody

Description

Product type	Primary Antibody
Code	BT-AP08615
Host	Rabbit
Isotype	IgG
Size	20ul, 50ul, 100ul
Immunogen	The antiserum was produced against synthesized peptide derived from human STAT1. AA range:668-717
Mol wt	87335
Species reactivity	Human, Mouse, Rat, Monkey
Clonality	Polyclonal
Recommended application	WB, IHC-p, IP, ELISA
Concentration	1 mg/ml
Full name	Stat1 Antibody
Synonyms	STAT1; Signal transducer and activator of transcription 1-alpha/beta; Transcription factor ISGF-3 components p91/p84

This product is for research use only, not for use in human, therapeutic or diagnostic procedure.

Background

Signal transducer and activator of transcription 1-alpha/beta encoded by STAT1 is a member of the STAT protein family. In response to cytokines and growth factors, STAT family members are phosphorylated by the receptor associated kinases, and then form homodimers.

Recommended Dilution

WB: 1: 500 - 1: 2000

IHC: 1: 100 - 1: 300

ELISA: 1: 10000

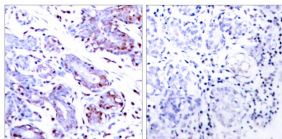
IP: 2 - 5 ug: mg lysate

Not yet tested in other applications.

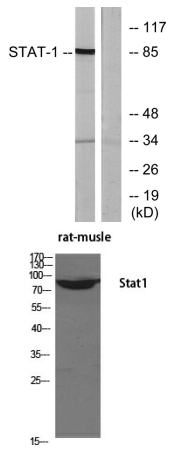
Images



Western Blot analysis of COS7 cells using Stat1 Polyclonal Antibody diluted at 1:500



Immunohistochemistry analysis of paraffin-embedded human breast carcinoma tissue, using STAT1 Antibody. The picture on the right is blocked with the synthesized peptide.



Western blot analysis of lysates from COLO205 cells, using STAT1 Antibody. The lane on the right is blocked with the synthesized peptide.

Western Blot analysis of various cells using Stat1 Polyclonal Antibody diluted at 1:500

Storage

-20°C for one year

501 Changsheng S Rd, Nanhu Dist, Jiaxing, Zhejiang, China

Tel: 86 21 31007137 | E-mail: save@bt-laboratory.com | www.bt-laboratory.com