

## SUDD Polyclonal Antibody

### Description

<b>Product type</b>	Primary Antibody
<b>Code</b>	BT-AP08672
<b>Host</b>	Rabbit
<b>Isotype</b>	IgG
<b>Size</b>	20ul, 50ul, 100ul
<b>Immunogen</b>	The antiserum was produced against synthesized peptide derived from human RIOK3. AA range:271-320
<b>Mol wt</b>	59093
<b>Species reactivity</b>	Human, Mouse
<b>Clonality</b>	Polyclonal
<b>Recommended application</b>	WB, ELISA
<b>Concentration</b>	1 mg/ml
<b>Full name</b>	SUDD Antibody
<b>Synonyms</b>	RIOK3; SUDD; Serine/threonine-protein kinase RIO3; RIO kinase 3; sudD homolog

**This product is for research use only, not for use in human, therapeutic or diagnostic procedure.**

### Background

RIOK3 (RIO kinase 3) was identified by the similarity of its product to the *Aspergillus nidulans* SUDD protein, an extragenic suppressor of the heat-sensitive bimD6 mutation that fails to attach properly to the spindle microtubules at a restrictive temperature. The specific function of RIOK3 has not yet been determined.

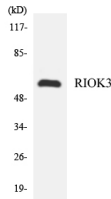
### Recommended Dilution

WB: 1: 500 - 1: 2000

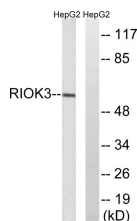
ELISA: 1: 40000

Not yet tested in other applications.

### Images



Western blot analysis of the lysates from HeLa cells using RIOK3 antibody.



Western blot analysis of lysates from HepG2 cells, using RIOK3 Antibody. The lane on the right is blocked with the synthesized peptide.

### Storage

-20°C for one year

