

## TCFL5 Polyclonal Antibody

### Description

|                         |   |
|-------------------------|---|
| Product type            | Primary Antibody  |
| Code                    | BT-AP08895  |
| Host                    | Rabbit  |
| Isotype                 | IgG   |
| Size                    | 20ul, 50ul, 100ul   |
| Immunogen               | The antiserum was produced against synthesized peptide derived from human TCFL5. AA range:311-360                     |
| Mol wt                  | 48263   |
| Species reactivity      | Human, Mouse  |
| Clonality               | Polyclonal  |
| Recommended application | WB, IHC-p, ELISA  |
| Concentration           | 1 mg/ml   |
| Full name               | TCFL5 Antibody  |
| Synonyms                | TCFL5; CHA; E2BP1; Transcription factor-like 5 protein; Cha transcription factor; HPV-16 E2-binding protein 1; E2BP-1 |

This product is for research use only, not for use in human, therapeutic or diagnostic procedure.

### Background

Putative transcription factor. Isoform 3 may play a role in early spermatogenesis.

### Recommended Dilution

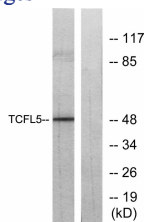
WB: 1: 500 - 1: 2000

IHC: 1: 100 - 1: 300

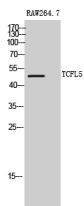
ELISA: 1: 20000

Not yet tested in other applications.

### Images



Western blot analysis of lysates from RAW264.7 cells, using TCFL5 Antibody. The lane on the right is blocked with the synthesized peptide.



Western Blot analysis of RAW264.7 cells using TCFL5 Polyclonal Antibody cells nucleus.

### Storage

-20°C for one year

