

## TDG Polyclonal Antibody

### Description

<b>Product type</b>	Primary Antibody
<b>Code</b>	BT-AP08909
<b>Host</b>	Rabbit
<b>Isotype</b>	IgG
<b>Size</b>	20ul, 50ul, 100ul
<b>Immunogen</b>	The antiserum was produced against synthesized peptide derived from human TDG. AA range:31-80
<b>Mol wt</b>	46053
<b>Species reactivity</b>	Human, Mouse, Rat
<b>Clonality</b>	Polyclonal
<b>Recommended application</b>	WB, IHC-p, IF, ELISA
<b>Concentration</b>	1 mg/ml
<b>Full name</b>	TDG Antibody
<b>Synonyms</b>	TDG; G/T mismatch-specific thymine DNA glycosylase; Thymine-DNA glycosylase

**This product is for research use only, not for use in human, therapeutic or diagnostic procedure.**

### Background

The protein encoded by TDG (thymine DNA glycosylase) belongs to the TDG/mug DNA glycosylase family. Thymine-DNA glycosylase (TDG) removes thymine moieties from G/T mismatches by hydrolyzing the carbon-nitrogen bond between the sugar-phosphate backbone of DNA and the mispaired thymine. With lower activity, this enzyme also removes thymine from C/T and T/T mispairings. TDG can also remove uracil and 5-bromouracil from mispairings with guanine. This enzyme plays a central role in cellular defense against genetic mutation caused by the spontaneous deamination of 5-methylcytosine and cytosine. TDG may have a pseudogene in the p arm of chromosome 12.

### Recommended Dilution

WB: 1: 500 - 1: 2000

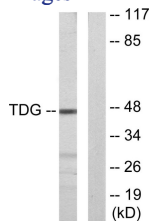
IHC: 1: 100 - 1: 300

IF: 1: 200 - 1: 1000

ELISA: 1: 5000

Not yet tested in other applications.

### Images



Western blot analysis of lysates from Jurkat cells, using TDG Antibody. The lane on the right is blocked with the synthesized peptide.

### Storage

-20°C for one year