

TFIIH p44 Polyclonal Antibody

Description

Product type	Primary Antibody
Code	BT-AP08954
Host	Rabbit
Isotype	IgG
Size	20ul, 50ul, 100ul
Immunogen	The antiserum was produced against synthesized peptide derived from human TF2H2. AA range:1-50
Mol wt	44419
Species reactivity	Human, Mouse, Rat
Clonality	Polyclonal
Recommended application	WB, IHC-p, IF, ELISA
Concentration	1 mg/ml
Full name	TFIIH p44 Antibody
Synonyms	GTF2H2; BTF2P44; General transcription factor IIH subunit 2; Basic transcription factor 2 44 kDa subunit; BTF2 p44; General transcription factor IIH polypeptide 2; TFIIH basal transcription factor com

This product is for research use only, not for use in human, therapeutic or diagnostic procedure.

Background

GTF2H2 is part of a 500 kb inverted duplication on chromosome 5q13. This duplicated region contains at least four genes and repetitive elements which make it prone to rearrangements and deletions. The repetitiveness and complexity of the sequence have also caused difficulty in determining the organization of this genomic region. GTF2H2 is within the telomeric copy of the duplication. Deletion of this gene sometimes accompanies deletion of the neighboring SMN1 gene in spinal muscular atrophy (SMA) patients but it is unclear if deletion of this gene contributes to the SMA phenotype. This gene encodes the 44 kDa subunit of RNA polymerase II transcription initiation factor IIH which is involved in basal transcription and nucleotide excision repair. Transcript variants for this gene have been described, but their full length nature has not been determined. A second copy of this gene within the centromeric copy of the duplication has been described in the literature. It is reported to be different by either two or four base pairs; however, no sequence data is currently available for the centromeric copy of the gene.

Recommended Dilution

WB: 1: 500 - 1: 2000

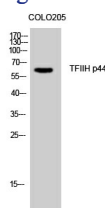
IHC: 1: 100 - 1: 300

IF: 1: 200 - 1: 1000

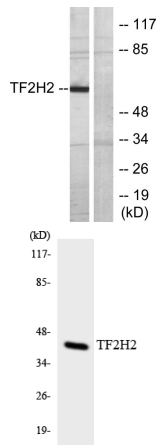
ELISA: 1: 40000

Not yet tested in other applications.

Images



Western Blot analysis of COLO205 cells using TFIIH p44 Polyclonal Antibody cells nucleus.



Western blot analysis of lysates from COLO205 cells, using TF2H2 Antibody. The lane on the right is blocked with the synthesized peptide.

Western blot analysis of the lysates from COLO205 cells using TF2H2 antibody.

Storage

-20°C for one year

501 Changsheng S Rd, Nanhu Dist, Jiaxing, Zhejiang, China

Tel: 86 21 31007137 | E-mail: save@bt-laboratory.com | www.bt-laboratory.com