

## TIP60 Polyclonal Antibody

### Description

Product type	Primary Antibody
Code	BT-AP09043
Host	Rabbit
Isotype	IgG
Size	20ul, 50ul, 100ul
Immunogen	The antiserum was produced against synthesized peptide derived from human TIP60. AA range:52-101
Mol wt	58582
Species reactivity	Human, Mouse
Clonality	Polyclonal
Recommended application	IHC-p, IF, ELISA
Concentration	1 mg/ml
Full name	TIP60 Antibody
Synonyms	KAT5; HTATIP; TIP60; Histone acetyltransferase KAT5; 60 kDa Tat-interactive protein; Tip60; Histone acetyltransferase HTATIP; HIV-1 Tat interactive protein; Lysine acetyltransferase 5; cPLA(2)-interac

**This product is for research use only, not for use in human, therapeutic or diagnostic procedure.**

### Background

The lysine acetyltransferase 5 encoded by KAT5 belongs to the MYST family of histone acetyl transferases (HATs) and was originally isolated as an HIV-1 TAT-interactive protein. HATs play important roles in regulating chromatin remodeling, transcription and other nuclear processes by acetylating histone and nonhistone proteins. This protein is a histone acetylase that has a role in DNA repair and apoptosis and is thought to play an important role in signal transduction. Alternative splicing of this gene results in multiple transcript variants.

### Recommended Dilution

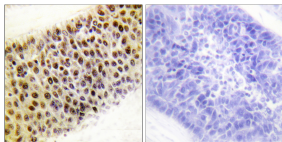
IHC: 1: 100 - 1: 300

IF: 1: 200 - 1: 1000

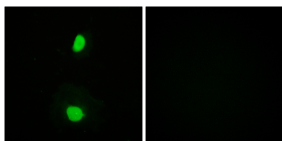
ELISA: 1: 5000

Not yet tested in other applications.

### Images



Immunohistochemistry analysis of paraffin-embedded human liver carcinoma tissue, using TIP60 Antibody. The picture on the right is blocked with the synthesized peptide.



Immunofluorescence analysis of HeLa cells, using TIP60 Antibody. The picture on the right is blocked with the synthesized peptide.

### Storage

-20°C for one year