

## TLE2 Polyclonal Antibody

### Description

<b>Product type</b>	Primary Antibody
<b>Code</b>	BT-AP09052
<b>Host</b>	Rabbit
<b>Isotype</b>	IgG
<b>Size</b>	20ul, 50ul, 100ul
<b>Immunogen</b>	The antiserum was produced against synthesized peptide derived from human TLE2. AA range:211-260
<b>Mol wt</b>	79841
<b>Species reactivity</b>	Human
<b>Clonality</b>	Polyclonal
<b>Recommended application</b>	WB, IHC-p, ELISA
<b>Concentration</b>	1 mg/ml
<b>Full name</b>	TLE2 Antibody
<b>Synonyms</b>	TLE2; Transducin-like enhancer protein 2; Enhancer of split groucho-like protein 2; ESG2

**This product is for research use only, not for use in human, therapeutic or diagnostic procedure.**

### Background

Transducin-like enhancer of split proteins (TLE1, TLE2, TLE3, TLE4, and TLE6) are mammalian homologs of Drosophila Groucho. TLEs contain several WD-repeats implicated in protein-protein interaction. TLEs are transcriptional co-repressors that bind to many transcription factors such as LEF1, Runx1, Oct-1, hepatocyte nuclear factor 3- $\beta$  as well as histone H3. TLEs are differentially expressed during animal development and may have overlapping as well as distinct functions.

### Recommended Dilution

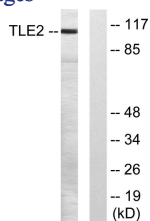
WB: 1: 500 - 1: 2000

IHC: 1: 100 - 1: 300

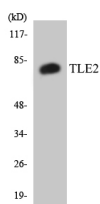
ELISA: 1: 20000

Not yet tested in other applications.

### Images



Western blot analysis of lysates from LOVO cells, using TLE2 Antibody. The lane on the right is blocked with the synthesized peptide.



Western blot analysis of the lysates from HT-29 cells using TLE2 antibody.

## Storage

-20°C for one year

501 Changsheng S Rd, Nanhu Dist, Jiaxing, Zhejiang, China

Tel: 86 21 31007137 | E-mail: [save@bt-laboratory.com](mailto:save@bt-laboratory.com) | [www.bt-laboratory.com](http://www.bt-laboratory.com)