

TLK1 Polyclonal Antibody

Description

Product type	Primary Antibody
Code	BT-AP09055
Host	Rabbit
Isotype	IgG
Size	20ul, 50ul, 100ul
Immunogen	The antiserum was produced against synthesized peptide derived from human TLK1. AA range:201-250
Mol wt	86700
Species reactivity	Human
Clonality	Polyclonal
Recommended application	WB, ELISA
Concentration	1 mg/ml
Full name	TLK1 Antibody
Synonyms	TLK1; KIAA0137; Serine/threonine-protein kinase tousled-like 1; PKU-beta; Tousled-like kinase 1

This product is for research use only, not for use in human, therapeutic or diagnostic procedure.

Background

Serine/threonine-protein kinase tousled-like 1 encoded by TLK1 is a serine/threonine kinase that may be involved in the regulation of chromatin assembly. The encoded protein is only active when it is phosphorylated, and this phosphorylation is cell cycle-dependent, with the maximal activity of this protein coming during S phase. The catalytic activity of this protein is diminished by DNA damage and by blockage of DNA replication. Three transcript variants encoding different isoforms have been found for this gene.

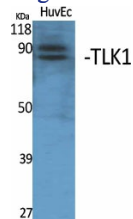
Recommended Dilution

WB: 1: 500 - 1: 2000

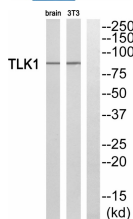
ELISA: 1: 40000

Not yet tested in other applications.

Images



Western Blot analysis of various cells using TLK1 Polyclonal Antibody. Secondary antibody was diluted at 1:20000



Western blot analysis of TLK1 Antibody. The lane on the right is blocked with the TLK1 peptide.

Storage

-20°C for one year

501 Changsheng S Rd, Nanhu Dist, Jiaxing, Zhejiang, China

Tel: 86 21 31007137 | E-mail: save@bt-laboratory.com | www.bt-laboratory.com