

## TLK2 Polyclonal Antibody

### Description

<b>Product type</b>	Primary Antibody
<b>Code</b>	BT-AP09056
<b>Host</b>	Rabbit
<b>Isotype</b>	IgG
<b>Size</b>	20ul, 50ul, 100ul
<b>Immunogen</b>	The antiserum was produced against synthesized peptide derived from human TLK2. AA range:191-240
<b>Mol wt</b>	87661
<b>Species reactivity</b>	Human, Mouse
<b>Clonality</b>	Polyclonal
<b>Recommended application</b>	WB, ELISA
<b>Concentration</b>	1 mg/ml
<b>Full name</b>	TLK2 Antibody
<b>Synonyms</b>	TLK2; Serine/threonine-protein kinase tousled-like 2; HsHPK; PKU-alpha; Tousled-like kinase 2

This product is for research use only, not for use in human, therapeutic or diagnostic procedure.

### Background

TLK2 encodes a nuclear serine/threonine kinase that was first identified in Arabidopsis. The serine/threonine-protein kinase tousled-like 2 is thought to function in the regulation of chromatin assembly in the S phase of the cell cycle by regulating the levels of a histone H3/H4 chaperone. This protein is associated with double-strand break repair of DNA damage caused by radiation. Pseudogenes of this gene are present on chromosomes 10 and 17. Alternate splicing results in multiple transcript variants.

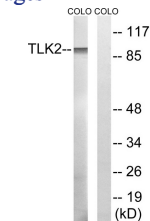
### Recommended Dilution

WB: 1: 500 - 1: 2000

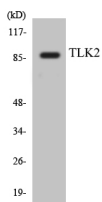
ELISA: 1: 5000

Not yet tested in other applications.

### Images



Western blot analysis of lysates from COLO cells, using TLK2 Antibody. The lane on the right is blocked with the synthesized peptide.



Western blot analysis of the lysates from HeLa cells using TLK2 antibody.



Western Blot analysis of various cells using TLK2 Polyclonal Antibody. Secondary antibody was diluted at 1:20000 cells nucleus.

### Storage

-20°C for one year

501 Changsheng S Rd, Nanhu Dist, Jiaxing, Zhejiang, China

Tel: 86 21 31007137 | E-mail: [save@bt-laboratory.com](mailto:save@bt-laboratory.com) | [www.bt-laboratory.com](http://www.bt-laboratory.com)