

## TMEM101 Polyclonal Antibody

### Description

<b>Product type</b>	Primary Antibody
<b>Code</b>	BT-AP09079
<b>Host</b>	Rabbit
<b>Isotype</b>	IgG
<b>Size</b>	20ul, 50ul, 100ul
<b>Immunogen</b>	The antiserum was produced against synthesized peptide derived from human TMEM101. AA range:101-150
<b>Mol wt</b>	28795
<b>Species reactivity</b>	Human, Mouse
<b>Clonality</b>	Polyclonal
<b>Recommended application</b>	WB, ELISA
<b>Concentration</b>	1 mg/ml
<b>Full name</b>	TMEM101 Antibody
<b>Synonyms</b>	TMEM101; Transmembrane protein 101; Putative NF-kappa-B-activating protein 130

This product is for research use only, not for use in human, therapeutic or diagnostic procedure.

### Background

TMEM101 (Transmembrane Protein 101) is a Protein Coding gene. GO annotations related to this gene include signal transducer activity.

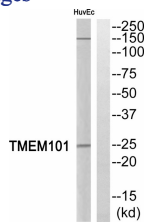
### Recommended Dilution

WB: 1: 500 - 1: 2000

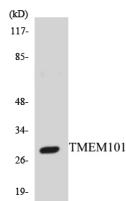
ELISA: 1: 10000

Not yet tested in other applications.

### Images



Western blot analysis of TMEM101 Antibody. The lane on the right is blocked with the TMEM101 peptide.



Western blot analysis of the lysates from HepG2 cells using TMEM101 antibody.

### Storage

-20°C for one year