

Topo II Alpha Polyclonal Antibody

Description

Product type	Primary Antibody
Code	BT-AP09134
Host	Rabbit
Isotype	IgG
Size	20ul, 50ul, 100ul
Immunogen	The antiserum was produced against synthesized peptide derived from human TOP2A. AA range:1482-1531
Mol wt	174385
Species reactivity	Human, Mouse, Rat, Dog
Clonality	Polyclonal
Recommended application	WB, IHC-p, ELISA
Concentration	1 mg/ml
Full name	Topo IIalpha Antibody
Synonyms	TOP2A; TOP2; DNA topoisomerase 2-alpha; DNA topoisomerase II; alpha isozyme

This product is for research use only, not for use in human, therapeutic or diagnostic procedure.

Background

TOP2A encodes a DNA topoisomerase, an enzyme that controls and alters the topologic states of DNA during transcription. This nuclear enzyme is involved in processes such as chromosome condensation, chromatid separation, and the relief of torsional stress that occurs during DNA transcription and replication. It catalyzes the transient breaking and rejoining of two strands of duplex DNA which allows the strands to pass through one another, thus altering the topology of DNA. Two forms of this enzyme exist as likely products of a gene duplication event. The gene encoding this form, alpha, is localized to chromosome 17 and the beta gene is localized to chromosome 3. The gene encoding this enzyme functions as the target for several anticancer agents and a variety of mutations in this gene have been associated with the development of drug resistance. Reduced activity of this enzyme may also play a role in ataxia-telangiectasia.

Recommended Dilution

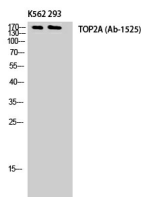
WB: 1: 500 - 1: 2000

IHC: 1: 100 - 1: 300

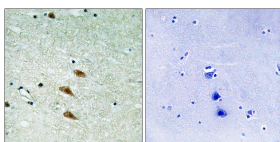
ELISA: 1: 20000

Not yet tested in other applications.

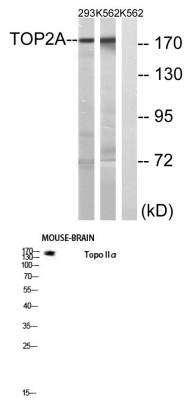
Images



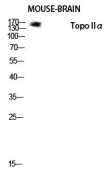
Western Blot analysis of K562 293 cells using Topo IIα Polyclonal Antibody diluted at 1:500.
Secondary antibody was diluted at 1:20000



Immunohistochemistry analysis of paraffin-embedded human brain tissue, using TOP2A Antibody.
The picture on the right is blocked with the synthesized peptide.



Western blot analysis of lysates from K562 and 293 cells, using TOP2A Antibody. The lane on the right is blocked with the synthesized peptide.



Western blot analysis of mouse-brain lysis using Topo II α antibody. Antibody was diluted at 1:500. Secondary antibody was diluted at 1:20000

Storage

-20°C for one year

501 Changsheng S Rd, Nanhu Dist, Jiaxing, Zhejiang, China

Tel: 86 21 31007137 | E-mail: save@bt-laboratory.com | www.bt-laboratory.com