

Topo IIBeta Polyclonal Antibody

Description

| | |
|--------------------------------|--|
| Product type | Primary Antibody |
| Code | BT-AP09135 |
| Host | Rabbit |
| Isotype | IgG |
| Size | 20ul, 50ul, 100ul |
| Immunogen | The antiserum was produced against synthesized peptide derived from human TOP2B. AA range:1-50 |
| Mol wt | 183267 |
| Species reactivity | Human, Mouse |
| Clonality | Polyclonal |
| Recommended application | WB, IHC-p, ELISA |
| Concentration | 1 mg/ml |
| Full name | Topo IIBeta Antibody |
| Synonyms | TOP2B; DNA topoisomerase 2-beta; DNA topoisomerase II; beta isozyme |

This product is for research use only, not for use in human, therapeutic or diagnostic procedure.

Background

TOP2B (topoisomerase (DNA) II beta) encodes a DNA topoisomerase, an enzyme that controls and alters the topologic states of DNA during transcription. This nuclear enzyme is involved in processes such as chromosome condensation, chromatid separation, and the relief of torsional stress that occurs during DNA transcription and replication. It catalyzes the transient breaking and rejoining of two strands of duplex DNA which allows the strands to pass through one another, thus altering the topology of DNA. Two forms of this enzyme exist as likely products of a gene duplication event. The gene encoding this form, beta, is localized to chromosome 3 and the alpha form is localized to chromosome 17. TOP2B encoding this enzyme functions as the target for several anticancer agents and a variety of mutations in TOP2B have been associated with the development of drug resistance. Reduced activity of this enzyme may also play a role in ataxia-telangiectasia. Alternative splicing of TOP2B results in two transcript variants; however, the second variant has not yet been fully described.

Recommended Dilution

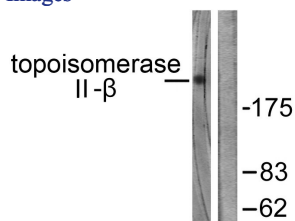
WB: 1: 500 - 1: 2000

IHC: 1: 100 - 1: 300

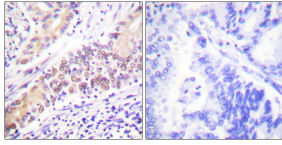
ELISA: 1: 20000

Not yet tested in other applications.

Images



Western blot analysis of lysates from Jurkat cells, using TOP2B Antibody. The lane on the right is blocked with the synthesized peptide.



Immunohistochemistry analysis of paraffin-embedded human lung carcinoma tissue, using TOP2B Antibody. The picture on the right is blocked with the synthesized peptide.

Storage

-20°C for one year

501 Changsheng S Rd, Nanhu Dist, Jiaxing, Zhejiang, China

Tel: 86 21 31007137 | E-mail: save@bt-laboratory.com | www.bt-laboratory.com