

## TPD52 Polyclonal Antibody

### Description

<b>Product type</b>	Primary Antibody
<b>Code</b>	BT-AP09148
<b>Host</b>	Rabbit
<b>Isotype</b>	IgG
<b>Size</b>	20ul, 50ul, 100ul
<b>Immunogen</b>	The antiserum was produced against synthesized peptide derived from human TPD52. AA range:41-90
<b>Mol wt</b>	19863
<b>Species reactivity</b>	Human, Mouse
<b>Clonality</b>	Polyclonal
<b>Recommended application</b>	IHC-p, ELISA
<b>Concentration</b>	1 mg/ml
<b>Full name</b>	TPD52 Antibody
<b>Synonyms</b>	TPD52; Tumor protein D52; Protein N8

**This product is for research use only, not for use in human, therapeutic or diagnostic procedure.**

### Background

The tumor protein D52 (TPD52) family consists of three members, TPD52, TPD52L1 (D53), and TPD52L2 (D54). These small coiled-coil motif bearing proteins interact in hetero- and homomeric fashion. The TPD52 gene maps to chromosome 8q21, and due to amplification, shows frequent overexpression in prostate and breast carcinomas. TPD52 bound to annexin V1 in a Ca<sup>2+</sup>-dependent manner, suggesting that these molecules may act in concert to regulate secretory processes in plasma cells.

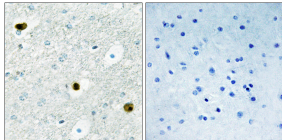
### Recommended Dilution

IHC: 1: 100 - 1: 300

ELISA: 1: 40000

Not yet tested in other applications.

### Images



Immunohistochemistry analysis of paraffin-embedded human brain tissue, using TPD52 Antibody. The picture on the right is blocked with the synthesized peptide.

### Storage

-20°C for one year