

FKBP8 Polyclonal Antibody

Description

Product type	Primary Antibody
Code	BT-AP09172
Host	Rabbit
Isotype	IgG
Size	20ul, 50ul, 100ul
Immunogen	Synthesized peptide derived from part region of human protein
Mol wt	N/A
Species reactivity	Human, Mouse, Rat
Clonality	Polyclonal
Recommended application	WB, ELISA
Concentration	1 mg/ml
Full name	Peptidyl-prolyl cis-trans isomerase FKBP8
Synonyms	Peptidyl-prolyl cis-trans isomerase FKBP8 ;PPIase FKBP8;EC 5.2.1.8;38 kDa FK506-binding protein;38 kDa FKBP;FKBP-38;hFKBP38;FK506-binding protein 8;FKBP-8;FKBPR38;Rotamase

This product is for research use only, not for use in human, therapeutic or diagnostic procedure.

Background

The protein encoded by this gene is a member of the immunophilin protein family, which play a role in immunoregulation and basic cellular processes involving protein folding and trafficking. Unlike the other members of the family, this encoded protein does not seem to have PPIase/rotamase activity. It may have a role in neurons associated with memory function.

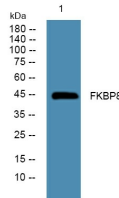
Recommended Dilution

WB: 1: 500 - 1: 2000

ELISA: 1: 5000 - 1: 20000

Not yet tested in other applications.

Images



Western blot analysis of lysates from KB cells, primary antibody was diluted at 1:1000, 4°C overnight

Storage

-20°C for 1 year