

TRAP220 Polyclonal Antibody

Description

Product type	Primary Antibody
Code	BT-AP09180
Host	Rabbit
Isotype	IgG
Size	20ul, 50ul, 100ul
Immunogen	The antiserum was produced against synthesized peptide derived from human MED1. AA range:641-690
Mol wt	168438
Species reactivity	Human, Mouse
Clonality	Polyclonal
Recommended application	WB, IHC-p, ELISA
Concentration	1 mg/ml
Full name	TRAP220 Antibody
Synonyms	MED1; ARC205; CRSP1; CRSP200; DRIP205; DRIP230; PBP; PPARBP; PPARGBP; RB18A; TRAP220; TRIP2; Mediator of RNA polymerase II transcription subunit 1; Activator-recruited cofactor 205 kDa component; ARC2

This product is for research use only, not for use in human, therapeutic or diagnostic procedure.

Background

The activation of gene transcription is a multistep process that is triggered by factors that recognize transcriptional enhancer sites in DNA. These factors work with co-activators to direct transcriptional initiation by the RNA polymerase II apparatus. The protein encoded by MED1 (mediator complex subunit 1) is a subunit of the CRSP (cofactor required for SP1 activation) complex, which, along with TFIID, is required for efficient activation by SP1. This protein is also a component of other multisubunit complexes e.g. Thyroid hormone receptor-(TR-) associated proteins which interact with TR and facilitate TR function on DNA templates in conjunction with initiation factors and cofactors. It also regulates p53-dependent apoptosis and it is essential for adipogenesis. This protein is known to have the ability to self-oligomerize.

Recommended Dilution

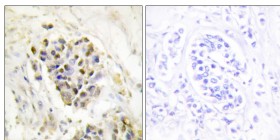
WB: 1: 500 - 1: 2000

IHC: 1: 100 - 1: 300

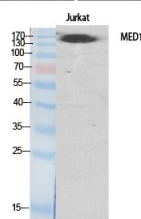
ELISA: 1: 10000

Not yet tested in other applications.

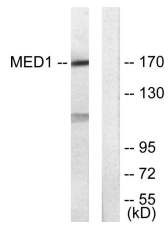
Images



Immunohistochemistry analysis of paraffin-embedded human breast carcinoma tissue, using MED1 Antibody. The picture on the right is blocked with the synthesized peptide.



Western Blot analysis of various cells using TRAP220 Polyclonal Antibody diluted at 1:500. Secondary antibody was diluted at 1:20000 cells nucleus.



Western blot analysis of lysates from Jurkat cells, using MED1 Antibody. The lane on the right is blocked with the synthesized peptide.

Storage

-20°C for one year

501 Changsheng S Rd, Nanhu Dist, Jiaxing, Zhejiang, China

Tel: 86 21 31007137 | E-mail: save@bt-laboratory.com | www.bt-laboratory.com