

TSHZ2 Polyclonal Antibody

Description

Product type	Primary Antibody
Code	BT-AP09265
Host	Rabbit
Isotype	IgG
Size	20ul, 50ul, 100ul
Immunogen	The antiserum was produced against synthesized peptide derived from human TSH2. AA range:811-860
Mol wt	115005
Species reactivity	Human, Mouse
Clonality	Polyclonal
Recommended application	IHC-p, IF, ELISA
Concentration	1 mg/ml
Full name	TSHZ2 Antibody
Synonyms	TSHZ2; C20orf17; TSH2; ZNF218; Teashirt homolog 2; Ovarian cancer-related protein 10-2; OVC10-2; Zinc finger protein 218

This product is for research use only, not for use in human, therapeutic or diagnostic procedure.

Background

TSHZ2 (Teashirt Zinc Finger Homeobox 2) is a Protein Coding gene. An important paralog of this gene is TSHZ1. Probable transcriptional regulator involved in developmental processes. May act as a transcriptional repressor (Potential).

Recommended Dilution

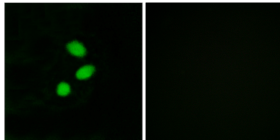
IHC: 1: 100 - 1: 300

IF: 1: 200 - 1: 1000

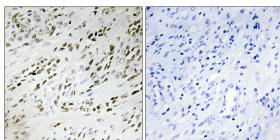
ELISA: 1: 20000

Not yet tested in other applications.

Images



Immunofluorescence analysis of MCF7 cells, using TSH2 Antibody. The picture on the right is blocked with the synthesized peptide.



Immunohistochemistry analysis of paraffin-embedded human prostate carcinoma tissue, using TSH2 Antibody. The picture on the right is blocked with the synthesized peptide.

Storage

-20°C for one year