

## TTC23 Polyclonal Antibody

### Description

Product type	Primary Antibody
Code	BT-AP09278
Host	Rabbit
Isotype	IgG
Size	20ul, 50ul, 100ul
Immunogen	The antiserum was produced against synthesized peptide derived from human TTC23. AA range:341-390
Mol wt	50009
Species reactivity	Human
Clonality	Polyclonal
Recommended application	WB, ELISA
Concentration	1 mg/ml
Full name	TTC23 Antibody
Synonyms	TTC23; HCC8; Tetratricopeptide repeat protein 23; TPR repeat protein 23; Cervical cancer proto-oncogene 8 protein; HCC-8

This product is for research use only, not for use in human, therapeutic or diagnostic procedure.

### Background

TTC23 (Tetratricopeptide Repeat Domain 23) is a Protein Coding gene. An important paralog of this gene is TTC23L.

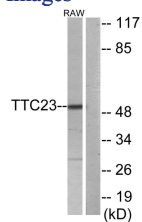
### Recommended Dilution

WB: 1: 500 - 1: 2000

ELISA: 1: 40000

Not yet tested in other applications.

### Images



Western blot analysis of lysates from RAW264.7 cells, using TTC23 Antibody. The lane on the right is blocked with the synthesized peptide.

### Storage

-20°C for one year