

## TTF-1 Polyclonal Antibody

### Description

Product type	Primary Antibody
Code	BT-AP09279
Host	Rabbit
Isotype	IgG
Size	20ul, 50ul, 100ul
Immunogen	The antiserum was produced against synthesized peptide derived from human TTF-1. AA range:27-76
Mol wt	38596
Species reactivity	Human, Mouse, Rat
Clonality	Polyclonal
Recommended application	WB, ELISA
Concentration	1 mg/ml
Full name	TTF-1 Antibody
Synonyms	NKX2-1; NKX2A; TITF1; TTF1; Homeobox protein Nkx-2.1; Homeobox protein NK-2 homolog A; Thyroid nuclear factor 1; Thyroid transcription factor 1; TTF-1

This product is for research use only, not for use in human, therapeutic or diagnostic procedure.

### Background

NKX2-1 (NK2 homeobox 1) encodes a protein initially identified as a thyroid-specific transcription factor. The encoded protein binds to the thyroglobulin promoter and regulates the expression of thyroid-specific genes but has also been shown to regulate the expression of genes involved in morphogenesis. Mutations and deletions in NKX2-1 are associated with benign hereditary chorea, choreoathetosis, congenital hypothyroidism, and neonatal respiratory distress, and may be associated with thyroid cancer. Multiple transcript variants encoding different isoforms have been found for NKX2-1. This gene shares the symbol/alias TTF1 with another gene, transcription termination factor 1, which plays a role in ribosomal gene transcription.

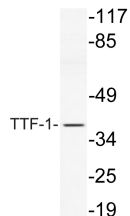
### Recommended Dilution

WB: 1: 500 - 1: 2000

ELISA: 1: 10000

Not yet tested in other applications.

### Images



Western blot analysis of lysate from NIH/3T3 cells, using TTF-1 antibody.

### Storage

-20°C for one year