

TTF-I Polyclonal Antibody

Description

Product type	Primary Antibody
Code	BT-AP09281
Host	Rabbit
Isotype	IgG
Size	20ul, 50ul, 100ul
Immunogen	The antiserum was produced against synthesized peptide derived from human TTF1. AA range:10-59
Mol wt	103051
Species reactivity	Human
Clonality	Polyclonal
Recommended application	IHC-p, ELISA
Concentration	1 mg/ml
Full name	TTF-I Antibody
Synonyms	TTF1; Transcription termination factor 1; TTF-1; RNA polymerase I termination factor; Transcription termination factor I; TTF-I

This product is for research use only, not for use in human, therapeutic or diagnostic procedure.

Background

TTF1 (transcription termination factor 1) encodes a transcription termination factor that is localized to the nucleolus and plays a critical role in ribosomal gene transcription. The encoded protein mediates the termination of RNA polymerase I transcription by binding to Sal box terminator elements downstream of pre-rRNA coding regions. Alternatively spliced transcript variants encoding multiple isoforms have been observed for TTF1. TTF1 shares the symbol/alias TFF1 with another gene, NK2 homeobox 1, also known as thyroid transcription factor 1, which plays a role in the regulation of thyroid-specific gene expression.

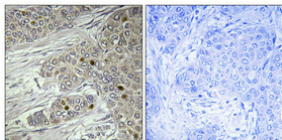
Recommended Dilution

IHC: 1: 100 - 1: 300

ELISA: 1: 20000

Not yet tested in other applications.

Images



Immunohistochemical analysis of paraffin-embedded Human breast cancer. Antibody was diluted at 1:100(4° overnight). High-pressure and temperature Tris-EDTA,pH8.0 was used for antigen retrieval. Negative contrl (right) obtaned from antibody was pre-absorbed by immunogen peptide.

Storage

-20°C for one year