

USP13 Polyclonal Antibody

Description

Product type	Primary Antibody
Code	BT-AP09434
Host	Rabbit
Isotype	IgG
Size	20ul, 50ul, 100ul
Immunogen	The antiserum was produced against synthesized peptide derived from human USP13. AA range:811-860
Mol wt	97299
Species reactivity	Human, Mouse
Clonality	Polyclonal
Recommended application	WB, IHC-p, ELISA
Concentration	1 mg/ml
Full name	USP13 Antibody
Synonyms	USP13; ISOT3; Ubiquitin carboxyl-terminal hydrolase 13; Deubiquitinating enzyme 13; Isopeptidase T-3; ISOT-3; Ubiquitin thioesterase 13; Ubiquitin-specific-processing protease 13

This product is for research use only, not for use in human, therapeutic or diagnostic procedure.

Background

Ubiquitinating enzymes (UBEs) catalyze protein ubiquitination, a reversible process countered by deubiquitinating enzyme (DUB) action. Five DUB subfamilies are recognized, including the USP, UCH, OTU, MJD, and JAMM enzymes. Ubiquitin carboxyl-terminal hydrolase 13 (USP13; isopeptidase T-3) contains four ubiquitin-associated/translation elongation factor EF1B, amino terminal (UBA) domains and one ubiquitin-specific processing protease (UBP) domain. The UB domain of USP13 contains a catalytic site, a zinc finger domain, and two UBA domains. Similar to other USP family members, USP13 contains cysteines and histidines that are likely involved in its catalytic mechanism. Studies show that USP13 plays a critical role in autophagy through the deubiquitination of target proteins such as BECN1 and USP10. Research also suggests that USP13 is implicated in the pathogenesis of melanoma through its ability to regulate the ubiquitination status of MITF.

Recommended Dilution

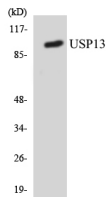
WB: 1: 500 - 1: 2000

IHC: 1: 100 - 1: 300

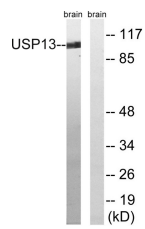
ELISA: 1: 40000

Not yet tested in other applications.

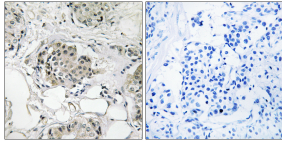
Images



Western blot analysis of the lysates from RAW264.7 cells using USP13 antibody.



Western blot analysis of lysates from mouse brain, using USP13 Antibody. The lane on the right is blocked with the synthesized peptide.



Immunohistochemistry analysis of paraffin-embedded human breast carcinoma tissue, using USP13 Antibody. The picture on the right is blocked with the synthesized peptide.

Storage

-20°C for one year

501 Changsheng S Rd, Nanhu Dist, Jiaxing, Zhejiang, China

Tel: 86 21 31007137 | E-mail: save@bt-laboratory.com | www.bt-laboratory.com