

## GON2 Polyclonal Antibody

### Description

<b>Product type</b>	Primary Antibody
<b>Code</b>	BT-AP09566
<b>Host</b>	Rabbit
<b>Isotype</b>	IgG
<b>Size</b>	20ul, 50ul, 100ul
<b>Immunogen</b>	Synthesized peptide derived from part region of human protein
<b>Mol wt</b>	N/A
<b>Species reactivity</b>	Human, Rat, Mouse
<b>Clonality</b>	Polyclonal
<b>Recommended application</b>	WB, ELISA
<b>Concentration</b>	1 mg/ml
<b>Full name</b>	Progonadoliberin-2
<b>Synonyms</b>	Progonadoliberin-2 ;Progonadoliberin II [Cleaved into: Gonadoliberin-2 ;Gonadoliberin II;Gonadotropin-releasing hormone II;GnRH II;Luliberin II;Luteinizing hormone-releasing hormone II;LH-R

**This product is for research use only, not for use in human, therapeutic or diagnostic procedure.**

### Background

This gene encodes a secreted peptide hormone and member of the gonadotropin-releasing hormone (GnRH) family of proteins. The encoded protein regulates reproductive function by stimulating the production and release of the gonadotropins follicle-stimulating hormone (FSH) and luteinizing hormone (LH). The encoded protein may inhibit endometrial, ovarian, prostate, and breast cancer cell proliferation. Alternative splicing results in multiple transcript variants.

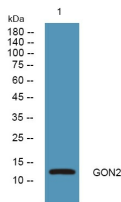
### Recommended Dilution

WB: 1: 500 - 1: 2000

ELISA: 1: 5000 - 1: 20000

Not yet tested in other applications.

### Images



Western blot analysis of lysates from Jarkat cells, primary antibody was diluted at 1:1000, 4°C overnight

### Storage

-20°C for 1 year