

## ZIP2 Polyclonal Antibody

### Description

<b>Product type</b>	Primary Antibody
<b>Code</b>	BT-AP09684
<b>Host</b>	Rabbit
<b>Isotype</b>	IgG
<b>Size</b>	20ul, 50ul, 100ul
<b>Immunogen</b>	The antiserum was produced against synthesized peptide derived from human SLC39A2. AA range:11-60
<b>Mol wt</b>	32751
<b>Species reactivity</b>	Human
<b>Clonality</b>	Polyclonal
<b>Recommended application</b>	WB, ELISA
<b>Concentration</b>	1 mg/ml
<b>Full name</b>	ZIP2 Antibody
<b>Synonyms</b>	SLC39A2; ZIP2; Zinc transporter ZIP2; 6A1; Eti-1; Solute carrier family 39 member 2; Zrt- and Irt-like protein 2; ZIP-2; hZIP2

This product is for research use only, not for use in human, therapeutic or diagnostic procedure.

### Background

SLC39A2 encodes a member of the ZIP family of metal ion transporters. The solute carrier family 39 member 2 functions as a zinc transporter. Mutations in this gene may be associated with susceptibility to carotid artery disease. Multiple transcript variants have been described.

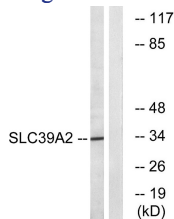
### Recommended Dilution

WB: 1: 500 - 1: 2000

ELISA: 1: 10000

Not yet tested in other applications.

### Images



Western blot analysis of lysates from Jurkat cells, using SLC39A2 Antibody. The lane on the right is blocked with the synthesized peptide.

### Storage

-20°C for one year