

## ZNF295 Polyclonal Antibody

### Description

<b>Product type</b>	Primary Antibody
<b>Code</b>	BT-AP09719
<b>Host</b>	Rabbit
<b>Isotype</b>	IgG
<b>Size</b>	20ul, 50ul, 100ul
<b>Immunogen</b>	The antiserum was produced against synthesized peptide derived from human ZNF295. AA range:731-780
<b>Mol wt</b>	118870
<b>Species reactivity</b>	Human, Mouse
<b>Clonality</b>	Polyclonal
<b>Recommended application</b>	IHC-p, ELISA
<b>Concentration</b>	1 mg/ml
<b>Full name</b>	ZNF295 Antibody
<b>Synonyms</b>	ZNF295; KIAA1227; ZBTB21; Zinc finger protein 295; Zinc finger and BTB domain-containing protein 21

**This product is for research use only, not for use in human, therapeutic or diagnostic procedure.**

### Background

ZNF295 bears 8 C2H2-type zinc fingers and a BTB/POZ (broad-complex, tramtrack, bric a brac/ Pox-virus and zinc finger) domain indicating a function in transcriptional regulation. ZNF295 has been shown to function as a transcriptional repressor and associates with ZFP161, a zinc-finger protein also known to function as a repressor of transcription.

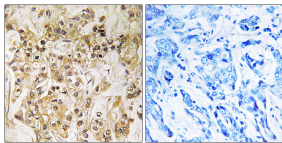
### Recommended Dilution

IHC: 1: 100 - 1: 300

ELISA: 1: 10000

Not yet tested in other applications.

### Images



Immunohistochemistry analysis of paraffin-embedded human breast carcinoma tissue, using ZNF295 Antibody. The picture on the right is blocked with the synthesized peptide.

### Storage

-20°C for one year

501 Changsheng S Rd, Nanhu Dist, Jiaxing, Zhejiang, China

Tel: 86 21 31007137 | E-mail: [save@bt-laboratory.com](mailto:save@bt-laboratory.com) | [www.bt-laboratory.com](http://www.bt-laboratory.com)