

ZnT-8 Polyclonal Antibody

Description

Product type	Primary Antibody
Code	BT-AP09752
Host	Rabbit
Isotype	IgG
Size	20ul, 50ul, 100ul
Immunogen	The antiserum was produced against synthesized peptide derived from human SLC30A8. AA range:171-220
Mol wt	40729
Species reactivity	Human
Clonality	Polyclonal
Recommended application	WB, ELISA
Concentration	1 mg/ml
Full name	ZnT-8 Antibody
Synonyms	SLC30A8; ZNT8; Zinc transporter 8; ZnT-8; Solute carrier family 30 member 8

This product is for research use only, not for use in human, therapeutic or diagnostic procedure.

Background

Zinc transporter 8 encoded by SLC30A8 is a zinc efflux transporter involved in the accumulation of zinc in intracellular vesicles. SLC30A8 is expressed at a high level only in the pancreas, particularly in islets of Langerhans. The encoded protein colocalizes with insulin in the secretory pathway granules of the insulin-secreting INS-1 cells. Allelic variants of this gene exist that confer susceptibility to diabetes mellitus, noninsulin-dependent (NIDDM). Several transcript variants encoding different isoforms have been found for this gene.

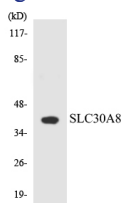
Recommended Dilution

WB: 1: 500 - 1: 2000

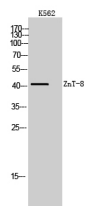
ELISA: 1: 10000

Not yet tested in other applications.

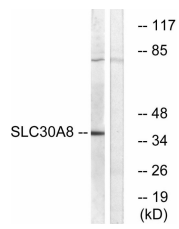
Images



Western blot analysis of the lysates from HeLa cells using SLC30A8 antibody.



Western Blot analysis of K562 cells using ZnT-8 Polyclonal Antibody. Secondary antibody was diluted at 1:20000



Western blot analysis of lysates from K562 cells, using SLC30A8 Antibody. The lane on the right is blocked with the synthesized peptide.

Storage

-20°C for one year

501 Changsheng S Rd, Nanhu Dist, Jiaxing, Zhejiang, China

Tel: 86 21 31007137 | E-mail: save@bt-laboratory.com | www.bt-laboratory.com