

ZZZ3 Polyclonal Antibody

Description

Product type	Primary Antibody
Code	BT-AP09766
Host	Rabbit
Isotype	IgG
Size	20ul, 50ul, 100ul
Immunogen	The antiserum was produced against synthesized peptide derived from human ZZZ3. AA range:341-390
Mol wt	102023
Species reactivity	Human, Mouse, Rat
Clonality	Polyclonal
Recommended application	WB, ELISA
Concentration	1 mg/ml
Full name	ZZZ3 Antibody
Synonyms	ZZZ3; ZZ-type zinc finger-containing protein 3

This product is for research use only, not for use in human, therapeutic or diagnostic procedure.

Background

Component of the ATAC complex, a complex with histone acetyltransferase activity on histones H3 and H4.

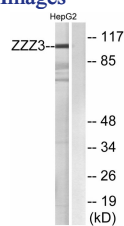
Recommended Dilution

WB: 1: 500 - 1: 2000

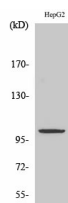
ELISA: 1: 5000

Not yet tested in other applications.

Images



Western blot analysis of lysates from HepG2 cells, using ZZZ3 Antibody. The lane on the right is blocked with the synthesized peptide.



Western Blot analysis of various cells using ZZZ3 Polyclonal Antibody. Secondary antibody was diluted at 1:20000 cells nucleus.

Storage

-20°C for one year