

LT4R1 Polyclonal Antibody

Description

Product type	Primary Antibody
Code	BT-AP10993
Host	Rabbit
Isotype	IgG
Size	20ul, 50ul, 100ul
Immunogen	Synthesized peptide derived from part region of human protein
Mol wt	N/A
Species reactivity	Human, Mouse, Rat
Clonality	Polyclonal
Recommended application	WB, ELISA
Concentration	1 mg/ml
Full name	Leukotriene B4 receptor 1
Synonyms	Leukotriene B4 receptor 1 ;LTB4-R 1;LTB4-R1;Chemoattractant receptor-like 1;G-protein coupled receptor 16;P2Y purinoceptor 7;P2Y7

This product is for research use only, not for use in human, therapeutic or diagnostic procedure.

Background

UTP and ADP. The activity of this receptor is mediated by G proteins which activate a phosphatidylinositol-calcium second messenger system. May be the cardiac P2Y receptor involved in the regulation of cardiac muscle contraction through modulation of L-type calcium currents. Is a receptor for leukotriene B4, a potent chemoattractant involved in inflammation and immune response.,PTM:Phosphorylated by GRK6 upon leukotriene B4 binding; which promotes desensitization.,Belongs to the G-protein coupled receptor 1 family.,tissue specificity:Expressed at highest levels in heart, skeletal muscle and at lower levels in brain and liver. High level of expression in lymphoid tissues.,

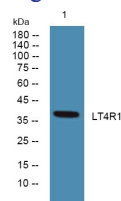
Recommended Dilution

WB: 1: 500 - 1: 2000

ELISA: 1: 5000 - 1: 20000

Not yet tested in other applications.

Images



Western blot analysis of lysates from SH-SY5Y cells, primary antibody was diluted at 1:1000, 4°C overnight

Storage

-20°C for 1 year