

## LT4R2 Polyclonal Antibody

### Description

<b>Product type</b>	Primary Antibody
<b>Code</b>	BT-AP10994
<b>Host</b>	Rabbit
<b>Isotype</b>	IgG
<b>Size</b>	20ul, 50ul, 100ul
<b>Immunogen</b>	Synthesized peptide derived from human protein . at AA range: 290-370
<b>Mol wt</b>	N/A
<b>Species reactivity</b>	Human, Rat, Mouse
<b>Clonality</b>	Polyclonal
<b>Recommended application</b>	WB, ELISA
<b>Concentration</b>	1 mg/ml
<b>Full name</b>	Leukotriene B4 receptor 2
<b>Synonyms</b>	Leukotriene B4 receptor 2 ;LTB4-R 2;LTB4-R2;LTB4 receptor JULF2;Leukotriene B4 receptor BLT2;Seven transmembrane receptor BLTR2

This product is for research use only, not for use in human, therapeutic or diagnostic procedure.

### Background

It is uncertain whether Met-1 or Met-32 is the initiator.,Low-affinity receptor for leukotrienes including leukotriene B4. Mediates chemotaxis of granulocytes and macrophages. The response is mediated via G-proteins that activate a phosphatidylinositol-calcium second messenger system. The rank order of affinities for the leukotrienes is LTB4 > 12-epi-LTB4 > LTB5 > LTB3.,Belongs to the G-protein coupled receptor 1 family.,tissue specificity:Widely expressed.,

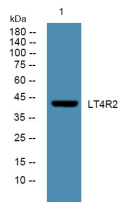
### Recommended Dilution

WB: 1: 500 - 1: 2000

ELISA: 1: 5000 - 1: 20000

Not yet tested in other applications.

### Images



Western blot analysis of lysates from K562 cells, primary antibody was diluted at 1:1000, 4°C overnight

### Storage

-20°C for 1 year