

PCD19 Rabbit Polyclonal Antibody

Description

Product type	Primary Antibody
Code	BT-AP11807
Host	Rabbit
Isotype	IgG
Size	100ul, 50ul, 20ul
Immunogen	Synthesized peptide derived from human PCD19
Mol wt	126280
Species reactivity	Human, Mouse
Clonality	Polyclonal
Recommended application	WB
Concentration	1 mg/ml
Full name	PCD19
Synonyms	PCD19

This product is for research use only, not for use in human, therapeutic or diagnostic procedure.

Background

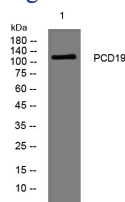
The protein encoded by this gene is a member of the delta-2 protocadherin subclass of the cadherin superfamily. The encoded protein is thought to be a calcium-dependent cell-adhesion protein that is primarily expressed in the brain. Defects in this gene are a cause of epilepsy female-restricted with mental retardation (EFMR). Three transcript variants encoding different isoforms have been found for this gene.

Recommended Dilution

WB: 1: 500 - 1: 2000

Not yet tested in other applications.

Images



Western blot analysis of lysates from HuvEc cells, primary antibody was diluted at 1:1000, 4°C overnight

Storage

-20°C for 1 year

501 Changsheng S Rd, Nanhu Dist, Jiaxing, Zhejiang, China

Tel: 86 21 31007137 | E-mail: save@bt-laboratory.com | www.bt-laboratory.com