

## NPTX2 Polyclonal Antibody

### Description

|                                |   |
|--------------------------------|---|
| <b>Product type</b>            | Primary Antibody  |
| <b>Code</b>                    | BT-AP11992  |
| <b>Host</b>                    | Rabbit  |
| <b>Isotype</b>                 | IgG   |
| <b>Size</b>                    | 20ul, 50ul, 100ul   |
| <b>Immunogen</b>               | Synthesized peptide derived from human protein . at AA range: 130-210 |
| <b>Mol wt</b>                  | N/A   |
| <b>Species reactivity</b>      | Human, Rat, Mouse   |
| <b>Clonality</b>               | Polyclonal  |
| <b>Recommended application</b> | WB, ELISA   |
| <b>Concentration</b>           | 1 mg/ml   |
| <b>Full name</b>               | Neuronal pentraxin-2  |
| <b>Synonyms</b>                | Neuronal pentraxin-2 ;NP2;Neuronal pentraxin II;NP-II                 |

This product is for research use only, not for use in human, therapeutic or diagnostic procedure.

### Background

This gene encodes a member of the family of neuronal petraxins, synaptic proteins that are related to C-reactive protein. This protein is involved in excitatory synapse formation. It also plays a role in clustering of alpha-amino-3-hydroxy-5-methyl-4-isoxazolepropionic acid (AMPA)-type glutamate receptors at established synapses, resulting in non-apoptotic cell death of dopaminergic nerve cells. Up-regulation of this gene in Parkinson disease (PD) tissues suggests that the protein may be involved in the pathology of PD.

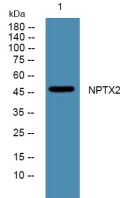
### Recommended Dilution

WB: 1: 500 - 1: 2000

ELISA: 1: 5000 - 1: 20000

Not yet tested in other applications.

### Images



Western blot analysis of lysates from DU145 cells, primary antibody was diluted at 1:1000, 4°C overnight

### Storage

-20°C for 1 year