

## PP6R2 Rabbit Polyclonal Antibody

### Description

Product type	Primary Antibody
Code	BT-AP12077
Host	Rabbit
Isotype	IgG
Size	20ul, 50ul, 100ul
Immunogen	Synthesized peptide derived from human PP6R2
Mol wt	N/A
Species reactivity	Human, Mouse
Clonality	Polyclonal
Recommended application	WB
Concentration	1 mg/ml
Full name	PP6R2
Synonyms	PP6R2; Serine/threonine-protein phosphatase 6 regulatory subunit 2; SAPS domain family member 2

This product is for research use only, not for use in human, therapeutic or diagnostic procedure.

### Background

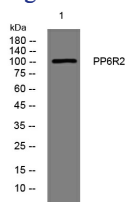
Protein phosphatase regulatory subunits| such as SAPS2| modulate the activity of protein phosphatase catalytic subunits by restricting substrate specificity| recruiting substrates| and determining the intracellular localization of the holoenzyme. SAPS2 is a regulatory subunit for the protein phosphatase-6 catalytic subunit (PPP6C; MIM 612725) (Stefansson and Brautigan| 2006

### Recommended Dilution

WB: 1: 500 - 1: 2000

Not yet tested in other applications.

### Images



Western blot analysis of lysates from K562 cells, primary antibody was diluted at 1:1000, 4°C overnight

### Storage

-20°C for 1 year

501 Changsheng S Rd, Nanhu Dist, Jiaxing, Zhejiang, China

Tel: 86 21 31007137 | E-mail: [save@bt-laboratory.com](mailto:save@bt-laboratory.com) | [www.bt-laboratory.com](http://www.bt-laboratory.com)