

p47-phox(Phospho Ser345) Polyclonal Antibody

Description

Product type	Primary Antibody
Code	BT-AP12651
Host	Rabbit
Isotype	IgG
Size	20ul, 50ul, 100ul
Immunogen	The antiserum was produced against synthesized peptide derived from human p47 phox around the phosphorylation site of Ser345. AA range:311-360
Mol wt	44683
Species reactivity	Human, Rat, Mouse
Clonality	Polyclonal
Recommended application	WB, IHC-p, IF, ELISA
Concentration	1 mg/ml
Full name	Neutrophil cytosol factor 1
Synonyms	Neutrophil cytosol factor 1; NCF1; NOXO2; SH3PXD1A; Neutrophil cytosol factor 1; NCF-1; 47 kDa autosomal chronic granulomatous disease protein; 47 kDa neutrophil oxidase factor; NCF-47K; Neutrophil NADPH oxidase factor 1; Nox organizer 2; Nox-organizing protein 2; SH3

This product is for research use only, not for use in human, therapeutic or diagnostic procedure.

Background

The protein encoded by this gene is a 47 kDa cytosolic subunit of neutrophil NADPH oxidase. This oxidase is a multicomponent enzyme that is activated to produce superoxide anion. Mutations in this gene have been associated with chronic granulomatous disease.

Recommended Dilution

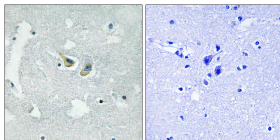
WB: 1: 500 - 1: 2000

IHC-p: 1: 100 - 1: 300

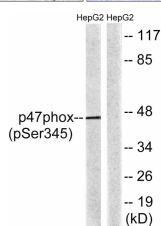
ELISA: 1: 5000

Not yet tested in other applications.

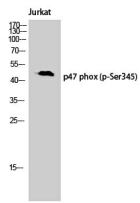
Images



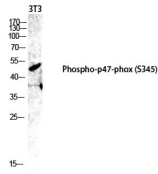
Immunohistochemistry analysis of paraffin-embedded human brain, using p47 phox (Phospho-Ser345) Antibody. The picture on the right is blocked with the phospho peptide.



Western Blot analysis of Jurkat cells using Phospho-p47-phox (S345) Polyclonal Antibody diluted at 1:1000



Western blot analysis of 3T3 lysis using Phospho-p47-phox (S345) antibody. Antibody was diluted at 1:1000



Western blot analysis of lysates from HepG2 cells treated with TNF 20ng/ml 5', using p47 phox (Phospho-Ser345) Antibody. The lane on the right is blocked with the phospho peptide.

Storage

-20°C for 1 year

501 Changsheng S Rd, Nanhu Dist, Jiaxing, Zhejiang, China

Tel: 86 21 31007137 | E-mail: save@bt-laboratory.com | www.bt-laboratory.com