

PMCH Polyclonal Antibody

Description

| | |
|--------------------------------|--|
| Product type | Primary Antibody |
| Code | BT-AP13195 |
| Host | Rabbit |
| Isotype | IgG |
| Size | 20ul, 50ul, 100ul |
| Immunogen | Synthetic peptide from human protein at AA range: 112-161 |
| Mol wt | N/A |
| Species reactivity | Human, Mouse, Rat |
| Clonality | Polyclonal |
| Recommended application | IHC-p, IF, ELISA |
| Concentration | 1 mg/ml |
| Full name | Pro-MCH [Cleaved into: Neuropeptide-glycine-glutamic acid |
| Synonyms | Pro-MCH [Cleaved into: Neuropeptide-glycine-glutamic acid ;NGE;Neuropeptide G-E; Neuropeptide-glutamic acid-isoleucine ;NEI;Neuropeptide E-I; Melanin-concentrating hormone ;MCH]; Pro-MCH [Cleaved into: Neuropeptide-glycine-glutamic acid; NGE; Neuropeptide G-E; Neuropeptide-glutamic acid-isoleucine; NEI; Neuropeptide E-I; Melanin-concentrating hormone; MCH; |

This product is for research use only, not for use in human, therapeutic or diagnostic procedure.

Background

This gene encodes a preproprotein that is proteolytically processed to generate multiple protein products. These products include melanin-concentrating hormone (MCH), neuropeptide-glutamic acid-isoleucine (NEI), and neuropeptide-glycine-glutamic acid (NGE). Melanin-concentrating hormone is a 19-amino acid neuropeptide that stimulates hunger and may additionally regulate energy homeostasis, reproductive function, and sleep. Pseudogenes of this gene have been identified on chromosome 5.

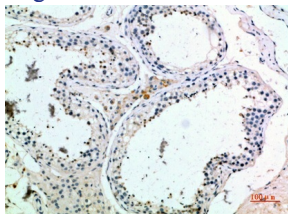
Recommended Dilution

IHC-p: 1: 50 - 1: 200

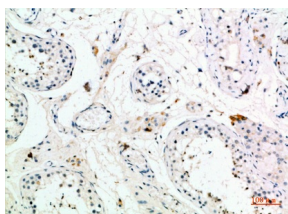
ELISA: 1: 10000 - 1: 20000

Not yet tested in other applications.

Images



Immunohistochemical analysis of paraffin-embedded human-testis, antibody was diluted at 1:200



Immunohistochemical analysis of paraffin-embedded human-testis, antibody was diluted at 1:200

Storage

-20°C for 1 year

501 Changsheng S Rd, Nanhu Dist, Jiaxing, Zhejiang, China

Tel: 86 21 31007137 | E-mail: save@bt-laboratory.com | www.bt-laboratory.com