

RETNB Polyclonal Antibody

Description

Product type	Primary Antibody
Code	BT-AP13674
Host	Rabbit
Isotype	IgG
Size	20ul, 50ul, 100ul
Immunogen	Synthesized peptide derived from part region of human protein
Mol wt	N/A
Species reactivity	Human, Mouse
Clonality	Polyclonal
Recommended application	WB, ELISA
Concentration	1 mg/ml
Full name	Resistin-like beta
Synonyms	Resistin-like beta ;Colon and small intestine-specific cysteine-rich protein;Colon carcinoma-related gene protein;Cysteine-rich secreted protein A12-alpha-like 1;Cysteine-rich secreted protein F

This product is for research use only, not for use in human, therapeutic or diagnostic procedure.

Background

Probable hormone.,Belongs to the resistin/FIZZ family.,subunit:Homodimer; disulfide-linked.,tissue specificity:Expressed only in the gastrointestinal tract, particularly the colon.,

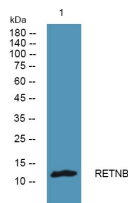
Recommended Dilution

WB: 1: 500 - 1: 2000

ELISA: 1: 5000 - 1: 20000

Not yet tested in other applications.

Images



Western blot analysis of lysates from K562 cells, primary antibody was diluted at 1:1000, 4°C overnight

Storage

-20°C for 1 year