

BEST2 Polyclonal Antibody

Description

Product type	Primary Antibody
Code	BT-AP14450
Host	Rabbit
Isotype	IgG
Size	20ul, 50ul, 100ul
Immunogen	Synthetic Peptide of BEST2
Mol wt	N/A
Species reactivity	Mouse, Rat
Clonality	Polyclonal
Recommended application	WB, IHC-p, IF
Concentration	N/A
Full name	Bestrophin-2
Synonyms	Bestrophin-2; Bestrophin-2; Vitelliform macular dystrophy 2-like protein 1

This product is for research use only, not for use in human, therapeutic or diagnostic procedure.

Background

This gene is a member of the bestrophin gene family of anion channels. Bestrophin genes share a similar gene structure with highly conserved exon-intron boundaries, but with distinct 3' ends. Bestrophins are transmembrane proteins that contain a homologous region rich in aromatic residues, including an invariant arg-phe-pro motif. Mutation in one of the family members (bestrophin 1) is associated with vitelliform macular dystrophy. The bestrophin 2 gene is mainly expressed in the retinal pigment epithelium and colon.

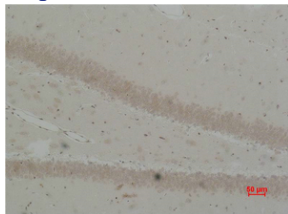
Recommended Dilution

WB: 1: 500 - 1: 1000

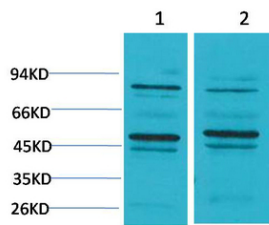
IHC: 1: 200 - 1: 500

Not yet tested in other applications.

Images



Immunohistochemical analysis of paraffin-embedded Rat Brain Tissue using BEST2 Polyclonal Antibody.



Western blot analysis of 1) Mouse Brain Tissue, 2) Rat Brain Tissue using BEST2 Polyclonal Antibody. Secondary antibody was diluted at 1:20000

Storage

-20°C for 1 year

501 Changsheng S Rd, Nanhu Dist, Jiaxing, Zhejiang, China

Tel: 86 21 31007137 | E-mail: save@bt-laboratory.com | www.bt-laboratory.com