

CD109 Polyclonal Antibody

Description

Product type	Primary Antibody
Code	BT-AP14792
Host	Rabbit
Isotype	IgG
Size	20ul, 50ul, 100ul
Immunogen	Synthetic peptide from human protein at AA range: 751-800
Mol wt	N/A
Species reactivity	Human, Rat, Mouse
Clonality	Polyclonal
Recommended application	IHC-p, IF, ELISA
Concentration	1 mg/ml
Full name	CD109 antigen
Synonyms	CD109 antigen ;150 kDa TGF-beta-1-binding protein;C3 and PZP-like alpha-2-macroglobulin domain-containing protein 7;Platelet-specific Gov antigen;p180;r150;CD antigen CD109; CD109 antigen; 150 kDa TGF-beta-1-binding protein; C3 and PZP-like alpha-2-macroglobulin domain-containing protein 7; Platelet-specific Gov antigen; p180; r150; CD antigen CD109

This product is for research use only, not for use in human, therapeutic or diagnostic procedure.

Background

This gene encodes a glycosyl phosphatidylinositol (GPI)-linked glycoprotein that localizes to the surface of platelets, activated T-cells, and endothelial cells. The protein binds to and negatively regulates signalling by transforming growth factor beta (TGF-beta). Multiple transcript variants encoding different isoforms have been found for this gene.

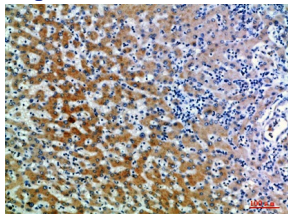
Recommended Dilution

IHC-p: 1: 50 - 1: 200

ELISA: 1: 10000 - 1: 20000

Not yet tested in other applications.

Images



Immunohistochemical analysis of paraffin-embedded human-liver, antibody was diluted at 1:200

Storage

-20°C for 1 year