

## CLIC1 Polyclonal Antibody

### Description

<b>Product type</b>	Primary Antibody
<b>Code</b>	BT-AP15023
<b>Host</b>	Rabbit
<b>Isotype</b>	IgG
<b>Size</b>	20ul, 50ul, 100ul
<b>Immunogen</b>	Synthetic Peptide of CLIC1
<b>Mol wt</b>	N/A
<b>Species reactivity</b>	Human, Rat, Mouse
<b>Clonality</b>	Polyclonal
<b>Recommended application</b>	IHC-p, IF
<b>Concentration</b>	1 mg/ml
<b>Full name</b>	Chloride intracellular channel protein 1
<b>Synonyms</b>	Chloride intracellular channel protein 1 ;Chloride channel ABP;Nuclear chloride ion channel 27;NCC27;Regulatory nuclear chloride ion channel protein;hRNCC; Chloride intracellular channel protein 1; Chloride channel ABP; Nuclear chloride ion channel 27; NCC27; Regulatory nuclear chloride ion channel protein; hRNCC

**This product is for research use only, not for use in human, therapeutic or diagnostic procedure.**

### Background

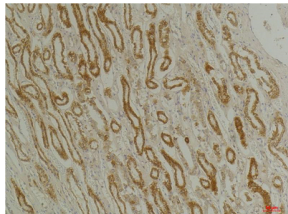
Chloride channels are a diverse group of proteins that regulate fundamental cellular processes including stabilization of cell membrane potential, transepithelial transport, maintenance of intracellular pH, and regulation of cell volume. Chloride intracellular channel 1 is a member of the p64 family; the protein localizes principally to the cell nucleus and exhibits both nuclear and plasma membrane chloride ion channel activity.

### Recommended Dilution

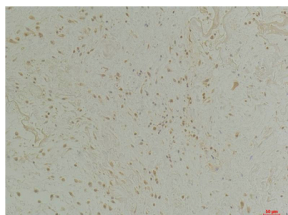
IHC: 1: 100 - 1: 200

Not yet tested in other applications.

### Images



Immunohistochemical analysis of paraffin-embedded Human Colon Tissue using CLIC1Rabbit pAb diluted at 1:200.



Immunohistochemical analysis of paraffin-embedded Human Kidney Tissue using CLIC1Rabbit pAb diluted at 1:200.

## Storage

-20°C for 1 year

501 Changsheng S Rd, Nanhu Dist, Jiaxing, Zhejiang, China

Tel: 86 21 31007137 | E-mail: [save@bt-laboratory.com](mailto:save@bt-laboratory.com) | [www.bt-laboratory.com](http://www.bt-laboratory.com)