

DNA Ligase IV(Phospho Thr650) Polyclonal Antibody

Description

Product type	Primary Antibody
Code	BT-AP15251
Host	Rabbit
Isotype	IgG
Size	20ul, 50ul, 100ul
Immunogen	The antiserum was produced against synthesized peptide derived from human DNA Ligase 4 around the phosphorylation site of Thr650. AA range:616-665
Mol wt	103971
Species reactivity	Human, Rat, Mouse
Clonality	Polyclonal
Recommended application	IHC-p, IF, ELISA
Concentration	1 mg/ml
Full name	DNA ligase 4
Synonyms	DNA ligase 4; LIG4; DNA ligase 4; DNA ligase IV; Polydeoxyribonucleotide synthase [ATP; 4

This product is for research use only, not for use in human, therapeutic or diagnostic procedure.

Background

The protein encoded by this gene is a DNA ligase that joins single-strand breaks in a double-stranded polydeoxynucleotide in an ATP-dependent reaction. This protein is essential for V(D)J recombination and DNA double-strand break (DSB) repair through nonhomologous end joining (NHEJ). This protein forms a complex with the X-ray repair cross complementing protein 4 (XRCC4), and further interacts with the DNA-dependent protein kinase (DNA-PK). Both XRCC4 and DNA-PK are known to be required for NHEJ. The crystal structure of the complex formed by this protein and XRCC4 has been resolved. Defects in this gene are the cause of LIG4 syndrome. Alternatively spliced transcript variants encoding the same protein have been observed.

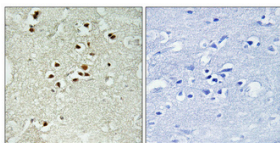
Recommended Dilution

IHC-p: 1: 100 - 1: 300

ELISA: 1: 10000

Not yet tested in other applications.

Images



Immunohistochemical analysis of paraffin-embedded Human brain. Antibody was diluted at 1:100(4°C overnight). High-pressure and temperature Tris-EDTA,pH8.0 was used for antigen retrieval. Negative control (right) obtained from antibody was pre-absorbed by immunogen peptide.

Storage

-20°C for 1 year