

WIT1 Polyclonal Antibody

Description

Product type	Primary Antibody
Code	BT-AP15541
Host	Rabbit
Isotype	IgG
Size	20ul, 50ul, 100ul
Immunogen	Synthesized peptide derived from human protein . at AA range: 20-100
Mol wt	N/A
Species reactivity	Human, Rat, Mouse
Clonality	Polyclonal
Recommended application	WB, ELISA
Concentration	1 mg/ml
Full name	Putative Wilms tumor upstream neighbor 1 gene protein
Synonyms	Putative Wilms tumor upstream neighbor 1 gene protein ;WIT-1;Wilms tumor-associated antisense RNA

This product is for research use only, not for use in human, therapeutic or diagnostic procedure.

Background

This gene is located upstream of the Wilms tumor 1 (WT1) gene; these two genes are bi-directionally transcribed from the same promoter region. This gene is imprinted in kidney, with preferential expression from the paternal allele. Imprinting defects at chromosome 11p13 may contribute to tumorigenesis.

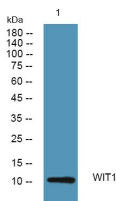
Recommended Dilution

WB: 1: 500 - 1: 2000

ELISA: 1: 5000 - 1: 20000

Not yet tested in other applications.

Images



Western blot analysis of lysates from SW480 cells, primary antibody was diluted at 1:1000, 4°C overnight

Storage

-20°C for 1 year