

## FKB1A Polyclonal Antibody

### Description

Product type	Primary Antibody
Code	BT-AP15597
Host	Rabbit
Isotype	IgG
Size	20ul, 50ul, 100ul
Immunogen	Synthesized peptide derived from part region of human protein
Mol wt	N/A
Species reactivity	Human, Mouse, Rat
Clonality	Polyclonal
Recommended application	WB, ELISA
Concentration	1 mg/ml
Full name	Peptidyl-prolyl cis-trans isomerase FKBP1A
Synonyms	Peptidyl-prolyl cis-trans isomerase FKBP1A ;PPIase FKBP1A;EC 5.2.1.8;12 kDa FK506-binding protein;12 kDa FKBP;FKBP-12;Calstabin-1;FK506-binding protein 1A;FKBP-1A;Immunophilin FKBP12

This product is for research use only, not for use in human, therapeutic or diagnostic procedure.

### Background

The protein encoded by this gene is a member of the immunophilin protein family, which play a role in immunoregulation and basic cellular processes involving protein folding and trafficking. The protein is a cis-trans prolyl isomerase that binds the immunosuppressants FK506 and rapamycin. It interacts with several intracellular signal transduction proteins including type I TGF-beta receptor. It also interacts with multiple intracellular calcium release channels, and coordinates multi-protein complex formation of the tetrameric skeletal muscle ryanodine receptor. In mouse, deletion of this homologous gene causes congenital heart disorder known as noncompaction of left ventricular myocardium. Multiple alternatively spliced variants, encoding the same protein, have been identified. The human genome contains five pseudogenes related to this gene, at least one of which is transcribed.

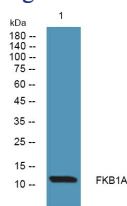
### Recommended Dilution

WB: 1: 500 - 1: 2000

ELISA: 1: 5000 - 1: 20000

Not yet tested in other applications.

### Images



Western blot analysis of lysates from KB cells, primary antibody was diluted at 1:1000, 4°C overnight

### Storage

-20°C for 1 year