

## Flt3-L Polyclonal Antibody

### Description

<b>Product type</b>	Primary Antibody
<b>Code</b>	BT-AP15639
<b>Host</b>	Rabbit
<b>Isotype</b>	IgG
<b>Size</b>	20ul, 50ul, 100ul
<b>Immunogen</b>	The antiserum was produced against synthesized peptide derived from the C-terminal region of human FLT3LG. AA range:171-220
<b>Mol wt</b>	26416
<b>Species reactivity</b>	Human, Rat, Mouse
<b>Clonality</b>	Polyclonal
<b>Recommended application</b>	WB, ELISA
<b>Concentration</b>	1 mg/ml
<b>Full name</b>	Fms-related tyrosine kinase 3 ligand
<b>Synonyms</b>	Fms-related tyrosine kinase 3 ligand; FLT3LG; Fms-related tyrosine kinase 3 ligand; Flt3 ligand; Flt3L; SL cytokine

**This product is for research use only, not for use in human, therapeutic or diagnostic procedure.**

### Background

Dendritic cells (DCs) provide the key link between innate and adaptive immunity by recognizing pathogens and priming pathogen-specific immune responses. FLT3LG controls the development of DCs and is particularly important for plasmacytoid DCs and CD8 (see MIM 186910)-positive classical DCs and their CD103 (ITGAE; MIM 604682)-positive tissue counterparts (summary by Sathaliyawala et al., 2010

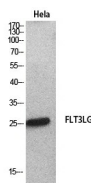
### Recommended Dilution

WB: 1: 500 - 1: 2000

ELISA: 1: 20000

Not yet tested in other applications.

### Images



Western Blot analysis of HeLa cells using Flt3-L Polyclonal Antibody. Secondary antibody was diluted at 1:20000

### Storage

-20°C for 1 year