

## c-Src Monoclonal Antibody

### Description

|                                |   |
|--------------------------------|---|
| <b>Product type</b>            | Primary Antibody  |
| <b>Code</b>                    | BT-MCA0012  |
| <b>Host</b>                    | Mouse   |
| <b>Isotype</b>                 | IgG   |
| <b>Size</b>                    | 50ul, 100ul   |
| <b>Immunogen</b>               | Purified recombinant fragment of c-Src (aa10-193) expressed in E. Coli.                         |
| <b>Mol wt</b>                  | N/A   |
| <b>Species reactivity</b>      | Human,Mouse,Rat   |
| <b>Clonality</b>               | Monoclonal  |
| <b>Recommended application</b> | WB, ELISA   |
| <b>Concentration</b>           | 1 mg/ml   |
| <b>Full name</b>               | Proto-oncogene tyrosine-protein kinase Src  |
| <b>Synonyms</b>                | SRC; SRC1; Proto-oncogene tyrosine-protein kinase Src; Proto-oncogene c-Src; pp60c-src; p60-Src |

This product is for research use only, not for use in human, therapeutic or diagnostic procedure.

### Background

This gene is highly similar to the v-src gene of Rous sarcoma virus. This proto-oncogene may play a role in the regulation of embryonic development and cell growth. The protein encoded by this gene is a tyrosine-protein kinase whose activity can be inhibited by phosphorylation by c-SRC kinase. Mutations in this gene could be involved in the malignant progression of colon cancer. Two transcript variants encoding the same protein have been found for this gene.

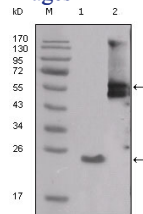
### Recommended Dilution

ELISA: 1:10000

WB: 1:500 - 1:2000

Not yet tested in other applications.

### Images



Western Blot analysis using c-Src Monoclonal antibody against truncated SRC-His recombinant protein (1) and PMA treated THP-1 cell lysate (2).

### Storage

-20°C for one year