

## PCNA Monoclonal Antibody(12D10)

### Description

Product type	Primary Antibody
Code	BT-MCA0068
Host	Mouse
Isotype	IgG
Size	20ul, 50ul, 100ul
Immunogen	Synthetic Peptide of PCNA
Mol wt	28769
Species reactivity	Human,Rat,Mouse
Clonality	Monoclonal
Recommended application	WB, IF, ICC, IHC-p
Concentration	1 mg/ml
Full name	Proliferating cell nuclear antigen
Synonyms	PCNA; Proliferating cell nuclear antigen; PCNA; Cyclin

This product is for research use only, not for use in human, therapeutic or diagnostic procedure.

### Background

The protein encoded by this gene is found in the nucleus and is a cofactor of DNA polymerase delta. The encoded protein acts as a homotrimer and helps increase the processivity of leading strand synthesis during DNA replication. In response to DNA damage, this protein is ubiquitinated and is involved in the RAD6-dependent DNA repair pathway. Two transcript variants encoding the same protein have been found for this gene. Pseudogenes of this gene have been described on chromosome 4 and on the X chromosome.

### Recommended Dilution

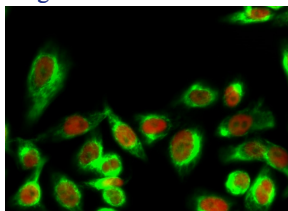
IF: 1:200

IHC: 1:200

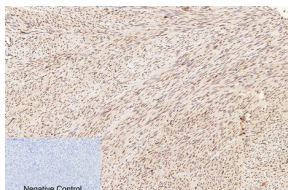
WB: 1:5000

Not yet tested in other applications.

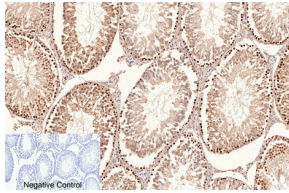
### Images



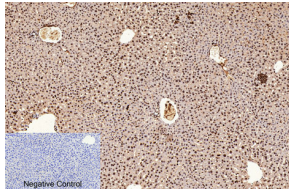
Immunofluorescence analysis of HeLa cell. 14-3-3 Theta/τ (phospho Ser232) Polyclonal Antibody(green) was diluted at 1:200(4°C overnight). (red) was diluted at 1:200(4°C overnight).



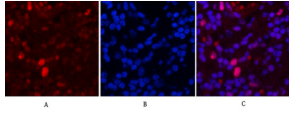
Immunohistochemical analysis of paraffin-embedded Human-uterus tissue. 1.PCNA Monoclonal antibody(12D10) was diluted at 1:200(4°C,overnight). 2.Sodium citrate pH 6.0 was used for antibody retrieval(>98°C,20min). 3.Secondary antibody was diluted at 1:200(room temperature, 30min). Negative control was used by secondary antibody only.



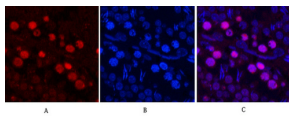
Immunohistochemical analysis of paraffin-embedded Rat-testis tissue. 1.PCNA Monoclonal antibody(12D10) was diluted at 1:200(4°C,overnight). 2.Sodium citrate pH 6.0 was used for antibody retrieval(>98°C,20min). 3.Secondary antibody was diluted at 1:200(room temperature, 30min). Negative control was used by secondary antibody only.



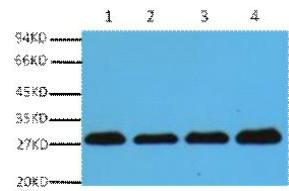
Immunohistochemical analysis of paraffin-embedded Mouse-liver tissue. 1.PCNA Monoclonal antibody(12D10) was diluted at 1:200(4°C,overnight). 2.Sodium citrate pH 6.0 was used for antibody retrieval(>98°C,20min). 3.Secondary antibody was diluted at 1:200(room temperature, 30min). Negative control was used by secondary antibody only.



Immunofluorescence analysis of Human-lung-cancer tissue. 1.PCNA Monoclonal antibody(12D10) (red) was diluted at 1:200(4°C,overnight). 2. Cy3 labled Secondary antibody was diluted at 1:300(room temperature, 50min).3. Picture B: DAPI(blue) 10min. Picture A:Target. Picture B: DAPI. Picture C: merge of A+B



Immunofluorescence analysis of Rat-testis tissue. 1.PCNA Monoclonal antibody(12D10)(red) was diluted at 1:200(4°C,overnight). 2. Cy3 labled Secondary antibody was diluted at 1:300(room temperature, 50min).3. Picture B: DAPI(blue) 10min. Picture A:Target. Picture B: DAPI. Picture C: merge of A+B



Western blot analysis of HeLa (1) Rat brain (2) NIH 3T3 (3) 293T (4) diluted at 1:5000.

### Storage

-20°C for one year

501 Changsheng S Rd, Nanhu Dist, Jiaxing, Zhejiang, China

Tel: 86 21 31007137 | E-mail: [save@bt-laboratory.com](mailto:save@bt-laboratory.com) | [www.bt-laboratory.com](http://www.bt-laboratory.com)