

## XRCC4 Monoclonal Antibody(5C10)

### Description

Product type	Primary Antibody
Code	BT-MCA0081
Host	Mouse
Isotype	IgG
Size	20ul, 50ul, 100ul
Immunogen	Synthetic Peptide of XRCC4
Mol wt	38287
Species reactivity	Human
Clonality	Monoclonal
Recommended application	WB, IHC-p, IF, ICC, IP
Concentration	1 mg/ml
Full name	DNA repair protein XRCC4
Synonyms	XRCC4; DNA repair protein XRCC4; X-ray repair cross-complementing protein 4

This product is for research use only, not for use in human, therapeutic or diagnostic procedure.

### Background

The protein encoded by this gene functions together with DNA ligase IV and the DNA-dependent protein kinase in the repair of DNA double-strand breaks. This protein plays a role in both non-homologous end joining and the completion of V(D)J recombination. Mutations in this gene can cause short stature, microcephaly, and endocrine dysfunction (SSMED). Alternative splicing generates several transcript variants.

### Recommended Dilution

IF: 1:200

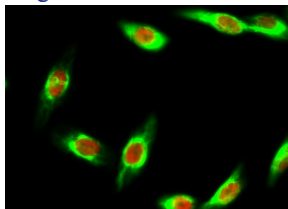
IHC: 1:50-300

IP: 1:200

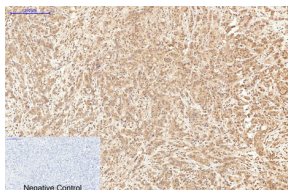
WB: 1:2000

Not yet tested in other applications.

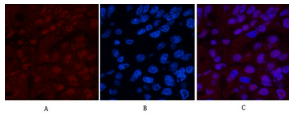
### Images



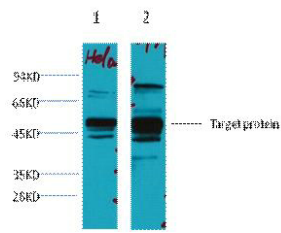
Immunofluorescence analysis of HeLa cell. Bak Polyclonal Antibody(green) was diluted at 1:200(4°C overnight). (red) was diluted at 1:200(4°C overnight).



Immunohistochemical analysis of paraffin-embedded Human-breast-cancer tissue. 1.XRCC4 Monoclonal antibody(5C10) was diluted at 1:200(4°C,overnight). 2.Sodium citrate pH 6.0 was used for antibody retrieval(>98°C,20min). 3.Secondary antibody was diluted at 1:200(room temperature, 30min). Negative control was used by secondary antibody only.



Immunofluorescence analysis of Human-liver-cancer tissue. 1.XRCC4 Monoclonal antibody(5C10) (red) was diluted at 1:200(4°C,overnight). 2. Cy3 labeled Secondary antibody was diluted at 1:300(room temperature, 50min).3. Picture B: DAPI(blue) 10min. Picture A:Target. Picture B: DAPI. Picture C: merge of A+B



Western blot analysis of 1) HeLa, 2) 293T diluted at 1:3000.

### Storage

-20°C for one year

501 Changsheng S Rd, Nanhu Dist, Jiaxing, Zhejiang, China

Tel: 86 21 31007137 | E-mail: [save@bt-laboratory.com](mailto:save@bt-laboratory.com) | [www.bt-laboratory.com](http://www.bt-laboratory.com)