

AAT Monoclonal Antibody

Description

Product type	Primary Antibody
Code	BT-MCA0120
Host	Mouse
Isotype	IgG
Size	50ul, 100ul
Immunogen	Purified recombinant human AAT (C-terminus) protein fragments expressed in E.coli.
Mol wt	N/A
Species reactivity	Human
Clonality	Monoclonal
Recommended application	WB
Concentration	1 mg/ml
Full name	Alpha-1-antitrypsin
Synonyms	SERPINA1; AAT; PI; Alpha-1-antitrypsin; Alpha-1 protease inhibitor; Alpha-1-antiproteinase; Serpin A1

This product is for research use only, not for use in human, therapeutic or diagnostic procedure.

Background

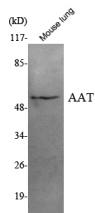
The protein encoded by this gene is secreted and is a serine protease inhibitor whose targets include elastase, plasmin, thrombin, trypsin, chymotrypsin, and plasminogen activator. Defects in this gene can cause emphysema or liver disease. Several transcript variants encoding the same protein have been found for this gene.

Recommended Dilution

WB: 1:1000 - 1:2000

Not yet tested in other applications.

Images



Western Blot analysis using AAT Monoclonal antibody against mouse lung lysate.

Storage

-20°C for one year

501 Changsheng S Rd, Nanhu Dist, Jiaxing, Zhejiang, China

Tel: 86 21 31007137 | E-mail: save@bt-laboratory.com | www.bt-laboratory.com